

H1 a

1) The hand in which 346 is written differs from that of the other additional pieces, and is remarkably similar (although occasionally employing other conventions) to that reproduced from the Kevseri MS by Burada and Süreksan.

H1 a 1: the added note and the repeat sign are taken from the 'Ali Ufki version. 9: the original has *d* J.

H1 a,b: the subsection boundary is marked by a dotted cross (similar to the previous lozenge) with superscript horizontal bar.

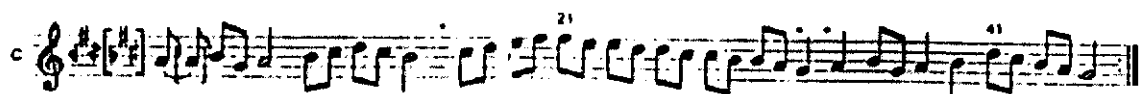
2) 'Ali Ufki 163v/294. 1 = J. The composer is not named.

H1 a 2: 10 *d*, 11-12 *e* *f*.

b

M a

b



1) H1 b: the emendation is confirmed by ' .li Uṭṭī's version.

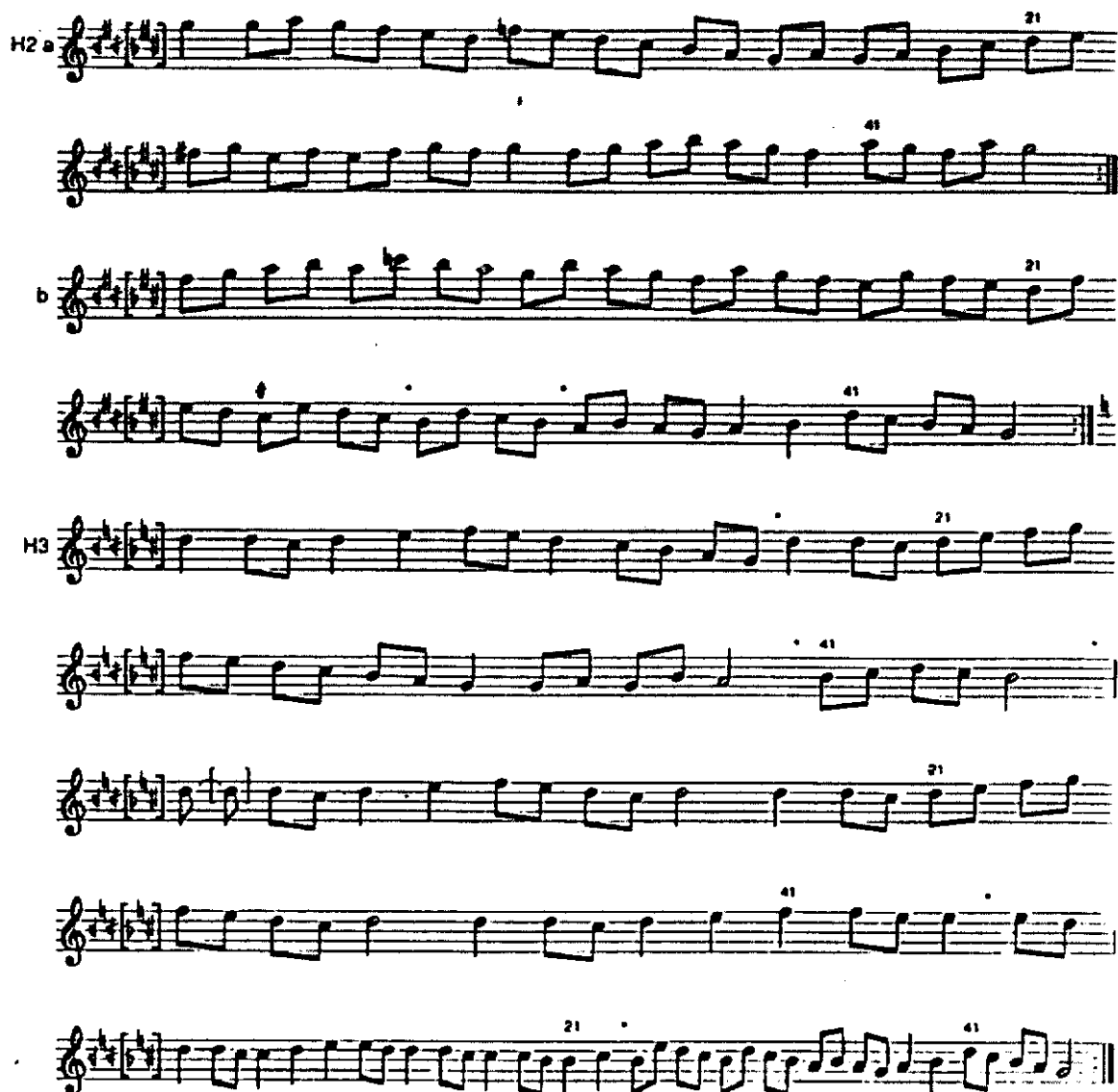
From M onwards a number of dots punctuate the notation: these generally correspond to divisions of the cycle into groups of 16 or 8 time units and may again have mnemonic function.

M a,b,c: the subsection boundaries are marked by c^{\cdot} or c^{\cdot} , the c no doubt being an abbreviation of *mükerrer*.

2) H1 b is considered the beginning of the *mūdāzime*. 1: 10 *d*, 11-12 *e f#*), 31-2 *Bd* (*g* is added above on the same stem), 33 *g*, 37 *f#*, 41 *e*, c^{\cdot} : 1 *f#*, 5 *e*, 9 *d*, 29-30 c^{\cdot} *Bd*, 31-2 *A*.

M a is omitted.

M c: 1 *G*, 34 *Bd*, 35 *A*. M c is followed by a repeat sign and then, after a short gap, by another.



1) H2 a,b: the subsection boundary is marked by c^{\cdot} .

H2 b: 24+d.

H3 2: 16,32+d.

2) H2 a: 16 *F#*, 40 *a*, 41-3 *g*, 44,46 *f#*.

H2 b: 22 *f#*, 30 c^{\cdot} , 31 *Bd*.

H3 1: 1-2 *d* c^{\cdot} (c^{\cdot}), 44 *Bd*, 45-8 c^{\cdot} . 1 is to be repeated. 2 and 3 are to be repeated.